

# PATHWAYS TO SPIRIT

## Volunteering for Native America

Volume 11, Issue 1

Spring 2007

### SECOND GREEN HOME TO BE BUILT ON PINE RIDGE

#### Special points of interest:

- **New Albertsons Community Partner Program.**
- **New Volunteers on board.**
- **New web site coming soon..**
- **Can you donate building materials?**
- **Ways to support Pathways without getting out your checkbook.**
- **Rosebud Reservation woman graduating from Law School.**

#### TUPI'S NEEDED

**Part of the mission of Pathways to Spirit is to support cultural integrity.**

**The summer is coming and a spiritual leader on the reservation is in need of 3 tipi's for ceremony. They can be purchased at the Denver Tent Company for \$260 each. Can you help with this very important need?**

Once again this summer, Pathways to Spirit will join with Dave Hanson and Eric Iverson of Oregon, to build another one bedroom home on Pine Ridge. This home will use straw bale and stick construction including the use of as many recycled materials as possible.

While we will continue donating good condition used mobile homes, we also want to begin a program to teach families how to build an inexpensive, energy efficient home using "green" energy efficient techniques.

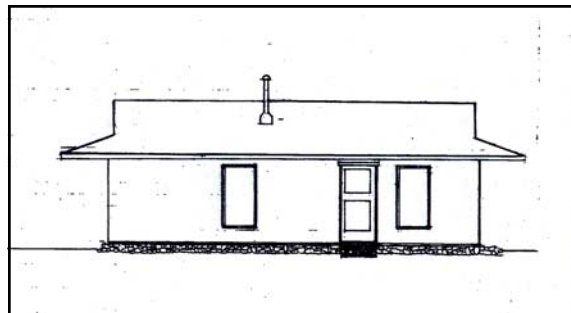
We are now in the process of selecting a family on the reservation with land and the desire to learn how to build homes for their family members.

We are putting out a call for the following new or good condition used materials:

- Entry door.
- Window size: 3-2x5 single hung vinyl: 1-2x4: 1-2x3: 1-3x2
- Kitchen sink
- Bathroom sink
- Vanity

- Tub
- Toilet
- Flooring
- 260 Straw Bales
- 66 Cubic Ft. Sacks concrete mix
- 15-3 tab roofing squares & roofing staples

We are now asking for you to contribute financially towards the



\$5000 in cost for straw bales and other materials such as stone and pipe for drainage. As you can see from the photo, it is a simple home but will be just right for an elder living in horrible conditions in government housing.

Dave and Eric have been working tirelessly since taking part in the construction of the first house on the reservation last year. They really feel they have come up with a more suitable design for all the challeng-

ing conditions on the reservation.

The housing situation on the reservation is simply stated: NOT GOOD! Many families are crowded into a small home. All too often, there are up to 30 people living in a two bedroom home. Having that many families with all their different needs put into such small quarters causes incredible tension and disrupts family life.

According to Bureau of Indian Affairs statistics, 80% of the population is considered homeless.

Many have land but have no way of putting a home on that land.

With an 85% unemployment rate and average yearly income of \$3500, it is nearly impossible to ever better ones life.

We are very grateful for any support (financial donations, skills, and/or building materials) with which you can assist.

We always welcome your participation and suggestions. Call us at (970) 282-8573 or email us at:

[pathwaystospirit@comcast.net](mailto:pathwaystospirit@comcast.net)

# PATHWAYS TO SPIRIT

Page 2

My friends, my relatives, maybe I want to tell you something important. Pray and honor Earth Mother and change your whole way of life. Give thanks for everything and appreciate the oxygen that come from trees. The trees are dying so pray sincerely so the trees will not die. Mother Earth is trying to tell us something and maybe Earth Mother is saying that she is trying to get back in balance. We have to expect more spiritual shock. Maybe some of us will listen to Earth Mother, maybe some of us will learn, maybe some of us won't. Earth Mother is our beginning and our home. Pray sincerely so she will be merciful to the children and future generations. What have we done so this happened? Why is Earth Mother not in balance? What can we do to help? Pray, give thanks, change your whole way of life. Honor Earth Mother and nature and remember your reason for being here now.

Chief Selo Black Crow

(Selo is no longer with us)

## NATIVE AMERICAN SEWING PROGRAM

by Cynthia Cunningham

The news of our sewing program continues to spread far and wide. Recently, we had the very fortunate opportunity to meet another amazing woman from the Rosebud Reservation. Vi Colombe, Rosebud quilt maker, teacher and Bush Grant recipient, recently visited the incarcerated youth at the Rosebud Juvenile Detention Center. During her visit she gave a straight-forward presentation, telling these young people about the difficulties she faced as a child and adolescent, and how learning to make positive choices and stick with them had made all the difference in her life. Vi is a dynamic, successful woman and these youth, all facing the results of bad decisions, could see directly the proof of her words.

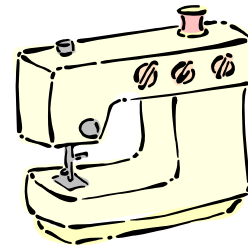
Vi's quilts are beautiful – composed around dynamic, complex stars in a bold array of colors. When she teaches she takes with her a trunk of her quilts, including the first quilt she ever made,

as well as several that now travel with her to museum shows across the country. When she spoke at the Juvenile Detention Center, Vi encouraged her audience to dare to dream and to go after their dreams with good choices. She credits her artistic success to what a person can do in following a positive dream. She said, "I dreamed in color", and the amazing quilts she has created have come directly from her vision.

Vi now teaches on reservations throughout the U.S. She is both visionary and direct in talking to Indian people. Her deeply creative life has led her to become a highly regarded speaker to groups of Indian women and young people who are looking for a path to inspiring, artistic, successful and

creative lives. When asked by the recipient if the quilt that Vi gifted her would bring good luck, Vi told the recipient, a state governor, that she puts her heart and soul into all her quilts and that

this one would give out a warm feeling and would help anyone who could feel it to make wise decisions.



To help further Vi's work we would like to give her several sets of sewing tools that she can take with her when she goes out to teach quilt making workshops to Indian women. These sets retail for \$75 each and include sewing scissors, a rotary cutter, a cutting board, and a ruler. Your donation of \$75 will help an Indian family learn to make quilts and to do so with the appropriate tools of good quality.

Google Vi Colombe (Dakota Prairie Museum) to see Vi's quilts.

### MISSION OF MERCY

Pathways to Spirit has a 48 ft. semi that collects and transports donations of good condition used furniture, appliances, etc. to the reservations in South Dakota. In the last years we have been unable to find a place to park on a Saturday and Sunday to collect your donations.

Any ideas or suggestions?

### Albertsons Community Partner Program Changes for cardholders

One of the ways you can donate to Pathways to Spirit is through the Community Partnership Program. Each time you shop for groceries or the pharmacy and present the community partner card, Pathways receives a percentage of your total dollars spent. If you already have a card that has been connected to the Preferred Card Program, there is a change for you. Albertsons has

suspended its Preferred Savings Program. So now you must show them a Community Partner Card. If you have your old one, this will be fine. If you do not have a Community Partner Card they will be available through our office sometime in July.

Albertsons has informed us they will give us the same quarterly donation that we received in De-

ember to make up for the delay in the processing of the new card program.

So, if you need a new card and you shop at Albertsons, please call or email us and we will send out your card as soon as we receive them.

This program is a blessing to us and we appreciate your support.

<< Note: This article was deleted in May 2007 because it is no longer relevant. Thanks. >>

**New Volunteers**

**Pathways to Spirit welcomes Paul Perkowski and Steve Hyatt from St. Andrews Episcopal Church in Ft. Collins, CO as the new Children's Library project coordinators. We are pleased to announce that a library in Erie, Colorado is building a new library and will be donating their entire children's collection to us. Also, we welcome Jamie Fredrickson of Ft. Collins . He and his fiancé Sarah will be helping us with public relations & marketing.**

**YES! PLEASE COUNT ME AS A SUPPORTER OF PATHWAYS TO SPIRIT**

Please make your tax-deductible donations payable to: Pathways to Spirit email us at: [pathwaystospirit@comcast.net](mailto:pathwaystospirit@comcast.net)

Name \_\_\_\_\_ Phone \_\_\_\_\_

Address \_\_\_\_\_

Enclosed is my contribution of \_\_\_\_\_\$25 \_\_\_\_\_\$50 \_\_\_\_\_\$100 \_\_\_\_\_ Other

Earmark my contribution for: General Operating Budget \_\_\_\_\_ Moving Mobile Homes \_\_\_\_\_ Earth Shelter \_\_\_\_\_

Native American Sewing Project \_\_\_\_\_ Propane \_\_\_\_\_ Electricity \_\_\_\_\_ Our Most Urgent Need \_\_\_\_\_ Tipi Fund \_\_\_\_\_

**PLEASE NOTIFY US OF ANY ADDRESS CHANGE. BULK MAIL IS NOT FORWARDED.**



A COLORADO NON-PROFIT CORPORATION

4307 Goldeneye Dr.

Ft. Collins, CO 80526

[www.pathwaystospirit.org](http://www.pathwaystospirit.org)

Email: [pathpathwaystospirit@comcast.net](mailto:pathpathwaystospirit@comcast.net)

## ASSISTANCE NEEDED

Soon it will be the two year anniversary of the car accident that paralyzed our friend Jennifer Black Elk.

Jennifer is now in assisted living and receives a ridiculously small stipend from her monthly social security disability check for her personal needs.

She really needs financial support for her everyday needs such as: phone service, personal care items, etc.

Jennifer is a strong young woman and is very involved with her children and grandchildren. Maybe someone would like to help her on a monthly basis. It would be greatly appreciated.

Jennifer is the daughter of Wallace Black Elk, who traveled the world helping people.

## DO YOU SHOP ON LINE?

### Your purchases could be helping our cause

Many of you enjoy the freedom and time saving aspects of shopping on-line. Be aware that there is a way your on-line shopping can benefit Pathways to Spirit.

Go to our web-site ([pathwaystospirit.org](http://pathwaystospirit.org)) and click on "Ways to Help". There are several companies listed as places to shop. If you go to these on-line shops through our web site, we will receive percentages of your total spent. These are ways to help us without having to spend any thing extra.

In this newsletter we would like to feature the on-line shopping site at: [www.iGive.com](http://www.iGive.com)

At iGive you will have the opportunity to shop at over 680 participating stores where (up to 26% or more) of every purchase you make at the Mall will be donated to Pathways to Spirit at no cost to you.

iGive has flower shops, golf shops, Target, K-Mart, iTunes, Dell computers, Turbo Tax, American Express, Banana Republic, Footsmart, Barnes and Noble, Eddie Bauer, Lands' End and Petsmart to name just a few.

Whatever you are shopping for, you'll find it at the stores at the iGive shopping mall. Many of our readers are already doing this and we receive quarterly checks to prove it.

We appreciate those who remember us this way because every little bit helps us to get one step closer to making a difference to a family living in bone crushing poverty.

So next time your go on line to make a purchase check out [iGive.com](http://iGive.com).

Membership is free and your privacy is guaranteed.